

*Deia*™

THE FEATHER

VIBRATING TICKLER

INSTRUCTION MANUAL

## POWER BUTTON

Press and hold the power button for 3 seconds to turn on. Press firmly to cycle through the 10 settings. Press and hold for 3 seconds to power off.



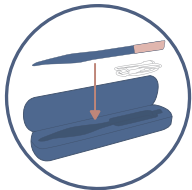
## CHARGING INDICATOR



## CHARGING PORT

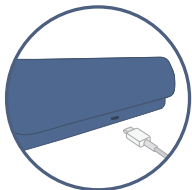
Plug the charging cable into the port on the back of the charging case and plug the other end into a 5V power source (standard mobile phone charger).

# HOW TO CHARGE



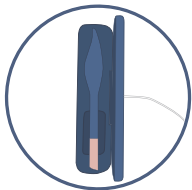
## STEP 1:

Place the device into the charging case so it fits within the mold.



## STEP 2:

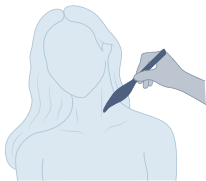
Plug the charging cable into the port on the back of the charging case.



## STEP 3:

Plug the other end into a 5V power source (standard mobile phone charger). The LED light on the case will pulsate slowly to indicate charging and turn solid when fully charged.

# WAYS TO USE



## WARM UP

Gently caress your partner's erogenous zones - behind the ears, sides of the neck, or the back to slowly increase their arousal.



## EXPERIMENT

Try the feather tickler on your partner to elevate the mood. Explore a combination of strokes using different pressures to deliver an arousing sensation.



## GET THERE

Lay the feather's flexible tip on your or your partner's genitals for an intense experience.

## **CLEANING:**

Be sure to clean thoroughly before and after each use. Clean using mild soap and warm water.

## **STORAGE:**

Store in a cool, dry place separately from other sexual wellness devices; devices of different material can damage each other if left in contact.

## **QUALITY:**

This product is manufactured using body-safe silicone that is harmless to the human body; free from phthalates, BPA and latex. Use water-based lubricant only.

## **CHARGING:**

Do not turn on while charging and/or cleaning. While charging, the LED light on the case will pulsate slowly and turn solid when fully charged. Use only with 5-volt USB wall adapter (standard mobile phone charger). Low battery alert: Light on device flashes rapidly when battery is running low. Allow 60 minutes for a full charge. Total usage time from full battery on highest setting is 50 minutes.

## **WARNINGS:**

Discontinue use if there is any discomfort for you or your partner. Do not expose charging case to water while charging.

## **WATERPROOF:**

The feather is waterproof to IPX7 standards and can be submerged in the bath or shower. Do not expose the charging case to water.

**FCC COMPLIANCE STATEMENT:**

This device complies with part 15 of the FCC Rules.

Operation is subject to the following two conditions:

- (1) This device may not cause harmful interference, and
- (2) this device must accept any interference received, including interference that may cause undesired operation.

Note: This equipment has been tested and found to comply with the limits for a Class B digital device, pursuant to Part 15 of the FCC Rules. These limits are designed to provide reasonable protection against harmful interference in a residential installation. This equipment generates, uses and can radiate radio frequency energy and, if not installed and used in accordance with the instructions, may cause harmful interference to radio communications.

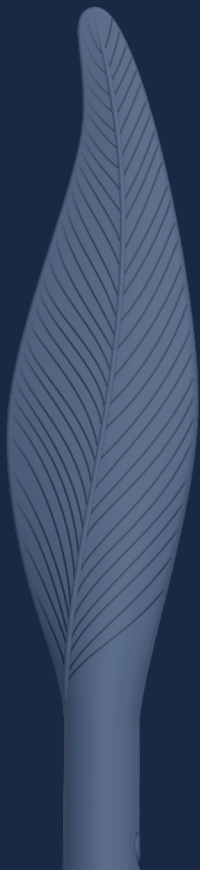
However, there is no guarantee that interference will not occur in a particular installation. If this equipment does cause harmful interference to radio or television reception, which can be determined by turning the equipment off and on, the user is encouraged to try to correct the interference by one or more of the following measures:

- Reorient or relocate the receiving antenna.
- Increase the separation between the equipment and receiver.
- Connect the equipment into an outlet on a circuit different from that to which the receiver is connected.
- Consult the dealer or an experienced radio/TV technician for help.

**Warning:** Changes or modifications to this unit not expressly approved by the part responsible for compliance could void the user's authority to operate the equipment.

**FCC Radiation Exposure Statement**

This device complies with FCC RF radiation exposure limits set forth for an uncontrolled environment. This transmitter must not be co-located or operating in conjunction with any other antenna or transmitter. During the operation of device a distance of 15 cm surrounding the device and 20 cm above the top surface of the device must be respected.



*Deia*™

For more information:  
Visit [deialove.com](https://deialove.com)